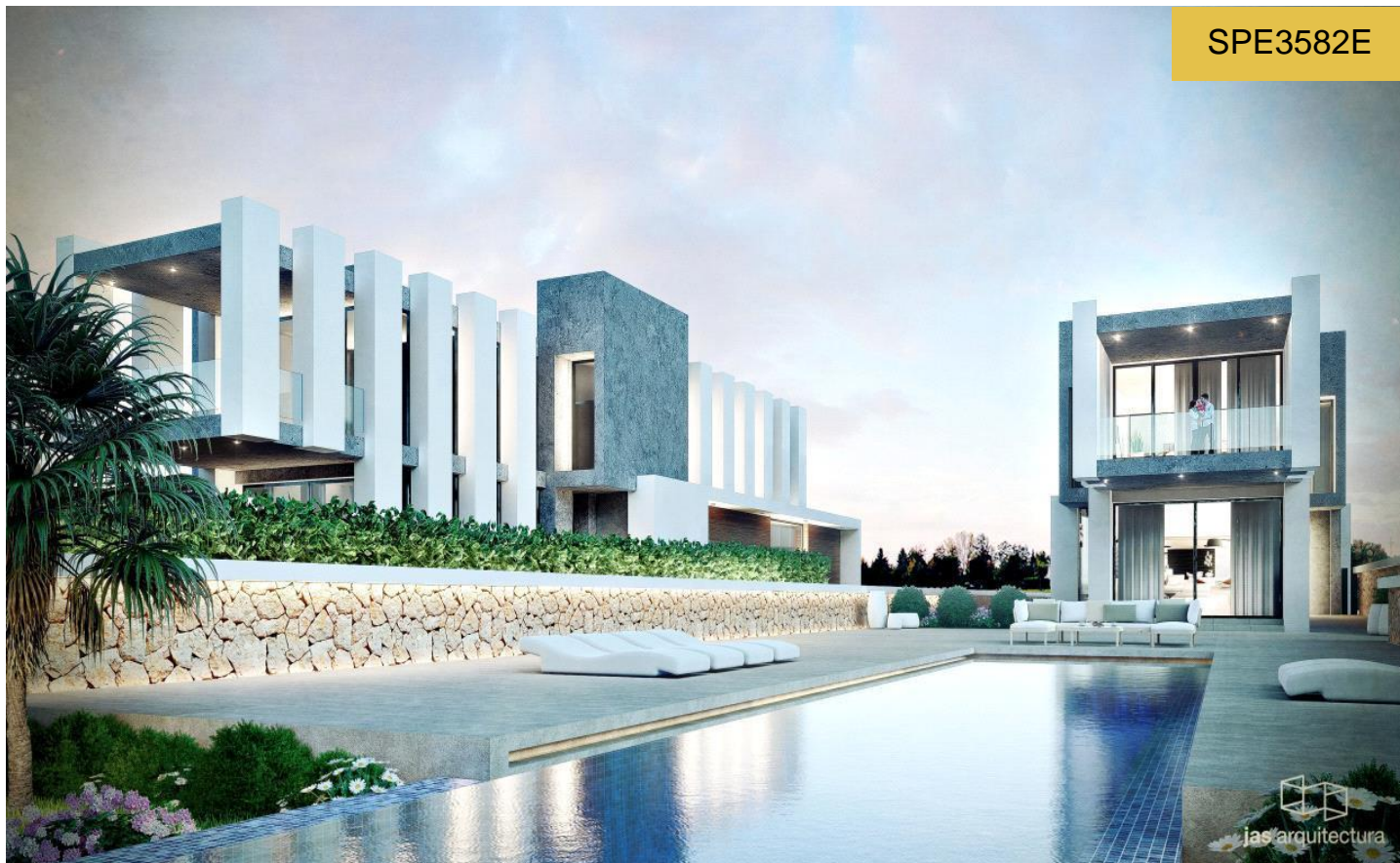


SPE3582E



Villa in La Nucia

€1,650,000



4



4



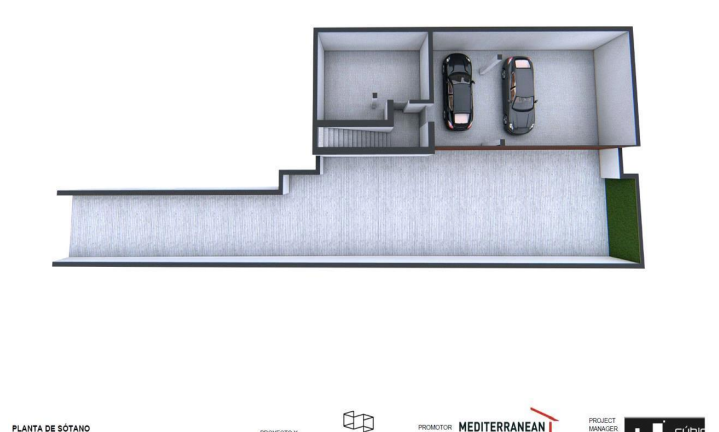
503m²



1,208m²



Sorolla Twins, residential located near the Coblanca urbanization of Benidorm. It is composed of 2 villas that are undoubtedly the most modern, elegant and exclusive homes in the area. Each villa is distributed on three levels having more than 500 m2 built and more than 420 m2 useful. The basement is intended for use as a garage and can accommodate four cars. On the first floor we find a...(Ask for More Details!)



PLANTA DE SÓTANO

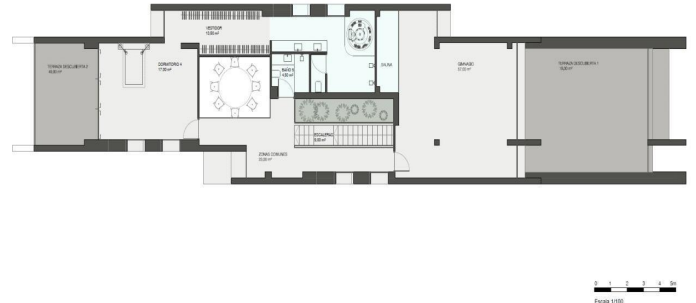
PROYECTO Y

PREMIER

MEDITERRANEAN

PROJECT MANAGER

CUBIC



PLANTA BAJA

PLANTA ALTA